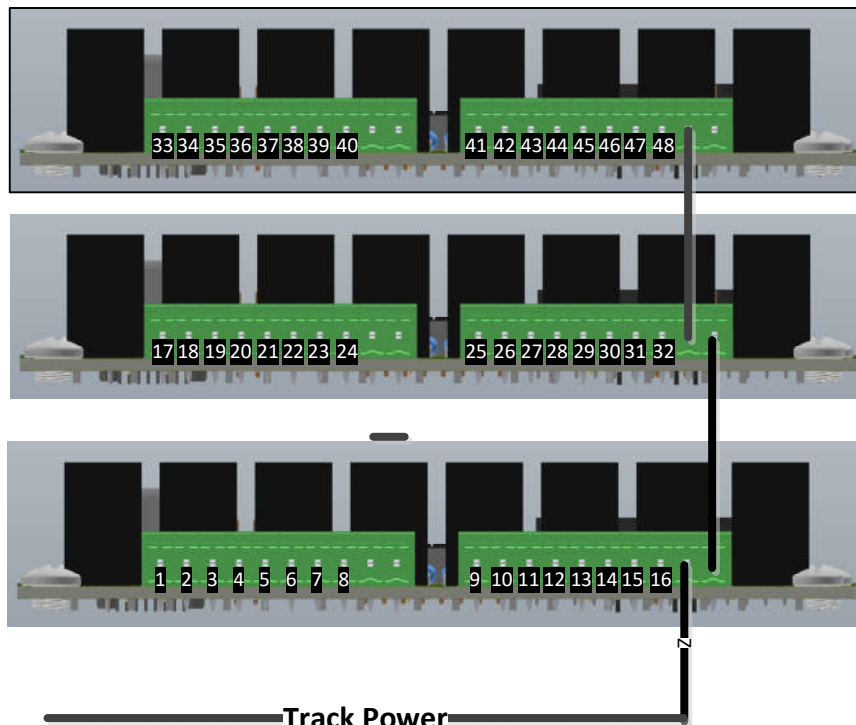
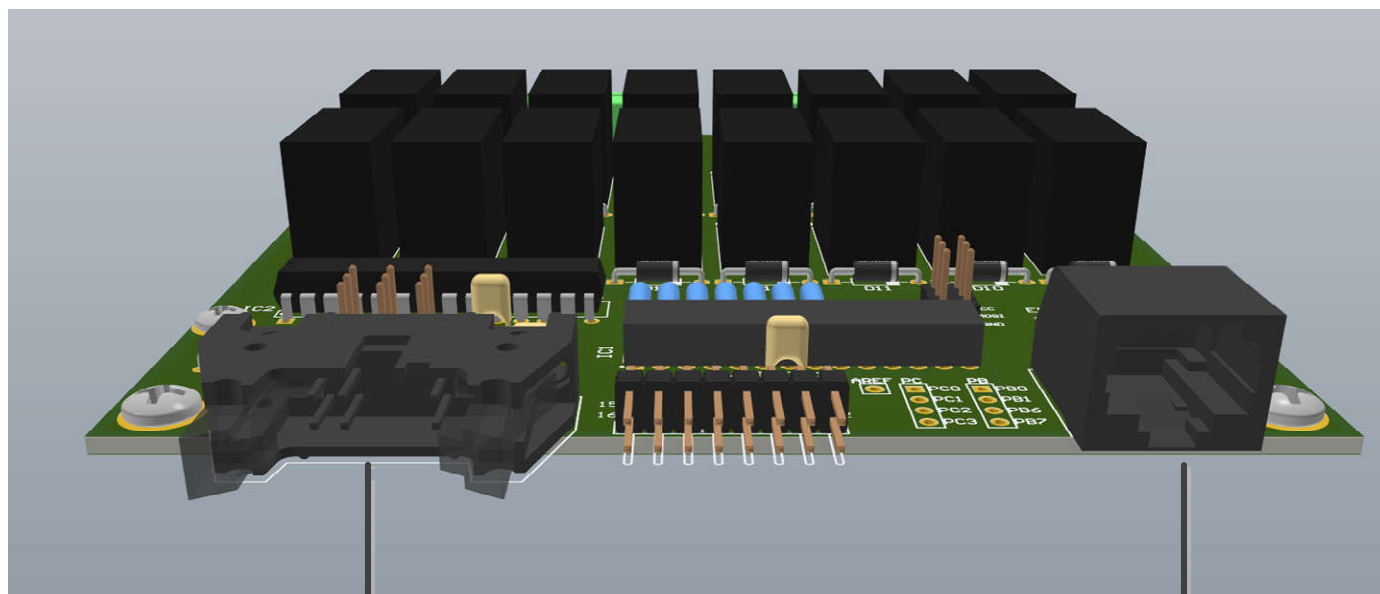


## APR2 Connection Diagram



1. Connect track power as shown to connectors. Right two contacts on each connector are shorted together.
2. Connect each service track to appropriate pin number on connector.



Board Interconnect

PTC Interconnect

Up to four yard lead tracks can be ignored by the APR. Basically the question to be answered is, do you want to switch the power off of one or more yard lead tracks when the bridge is not pointing to one of them. If the yard leads are switched the relay assignments start with track 1. Switching relays may be maximized this way. If ignoring track 1, you still have 16 switchable tracks. Relay 1 would switch when track 2 is selected, etc.



Track 1 ignored



Tracks 1 and 2 ignored



Tracks 1, 2 and 3 ignored



Tracks 1, 2, 3 and 4 ignored